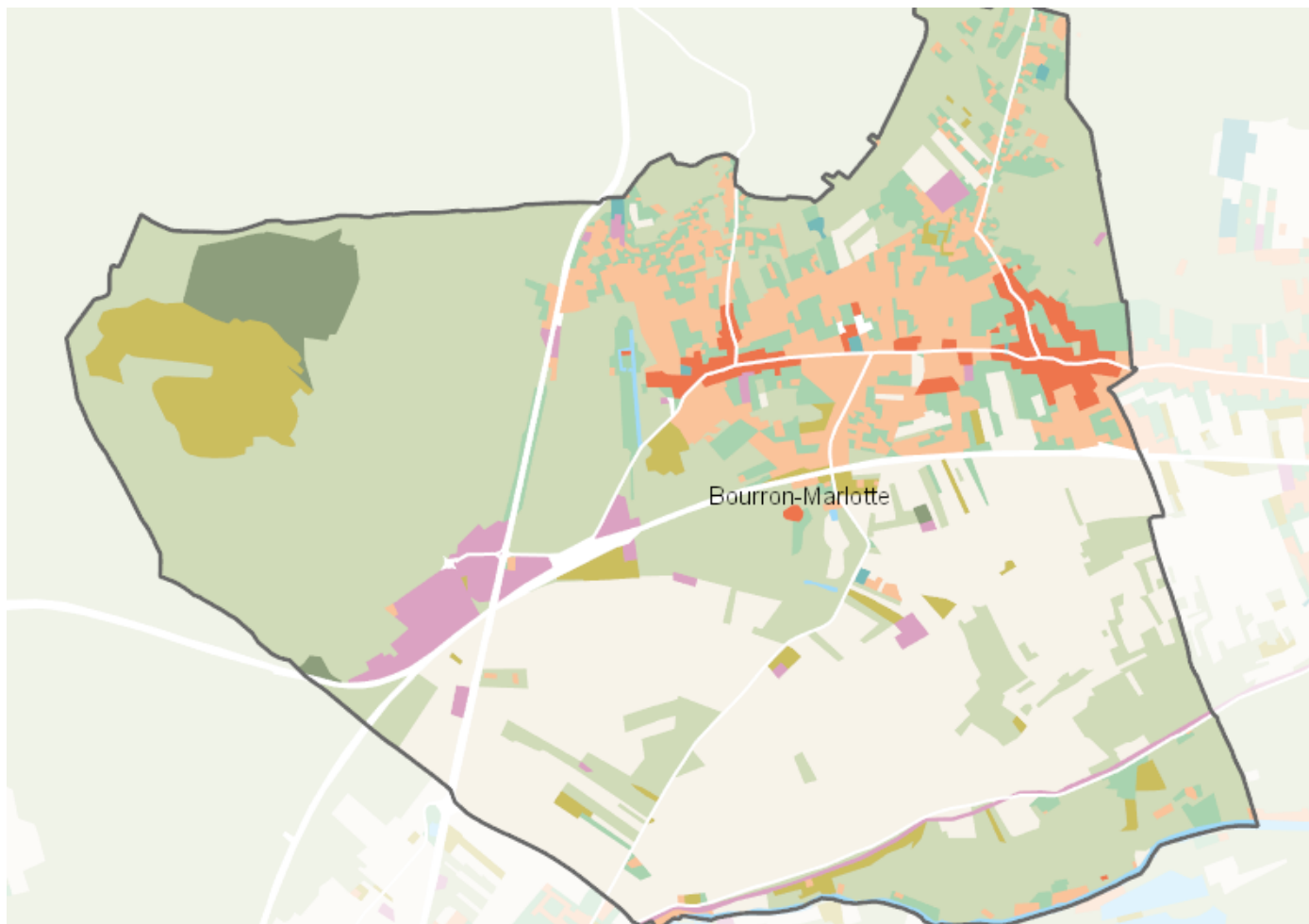


# OCCUPATION DU SOL SIMPLIFIÉE 2017

Bourron-Marlotte

CARTOGRAPHIE



## BILAN 2012 - 2017 (en ha)

| Type d'occupation du sol                        | Surface 2012   | Disparition  | Apparition  | Surface 2017  | Bilan        |
|---|----------------|--------------|-------------|---------------|--------------|
| 1 Bois ou forêt                                 | 480.69         | -2.55        | 0           | 478.14        | -2.55        |
| 2 Milieux semi-naturels                         | 52.52          | -0.14        | 0           | 52.38         | -0.14        |
| 3 Espaces agricoles                             | 316.28         | -0.31        | 0           | 315.96        | -0.31        |
| 4 Eau   | 6.31           | 0            | 0           | 6.31          | 0            |
| <b>Espace agricoles, forestiers et naturels</b> | <b>855.8</b>   | <b>-3</b>    | <b>0</b>    | <b>852.8</b>  | <b>-3</b>    |
| 5 Espaces ouverts artificialisés                | 79.5           | -1.11        | 0.3         | 78.69         | -0.81        |
| <b>Espaces ouverts artificialisés</b>           | <b>79.5</b>    | <b>-1.11</b> | <b>0.3</b>  | <b>78.69</b>  | <b>-0.81</b> |
| 6 Habitat individuel                            | 92.59          | 0            | 1.27        | 93.86         | 1.27         |
| 7 Habitat collectif                             | 22.7           | 0            | 0           | 22.7          | 0            |
| 8 Activités                                     | 29.21          | 0            | 0           | 29.21         | 0            |
| 9 Equipements                                   | 1.66           | 0            | 0.26        | 1.92          | 0.26         |
| 10 Transports                                   | 19.81          | 0            | 0.18        | 19.99         | 0.18         |
| 11 Carrières, décharges, chantiers              | 23.62          | -0.35        | 2.46        | 25.73         | 2.11         |
| <b>Espaces construits artificialisés</b>        | <b>189.59</b>  | <b>-0.16</b> | <b>3.98</b> | <b>193.41</b> | <b>3.82</b>  |
| <b>Total</b>                                    | <b>1124.89</b> | <b>-4.28</b> | <b>4.28</b> | <b>1124.9</b> | <b>0</b>     |

## CHIFFRES CLÉS

