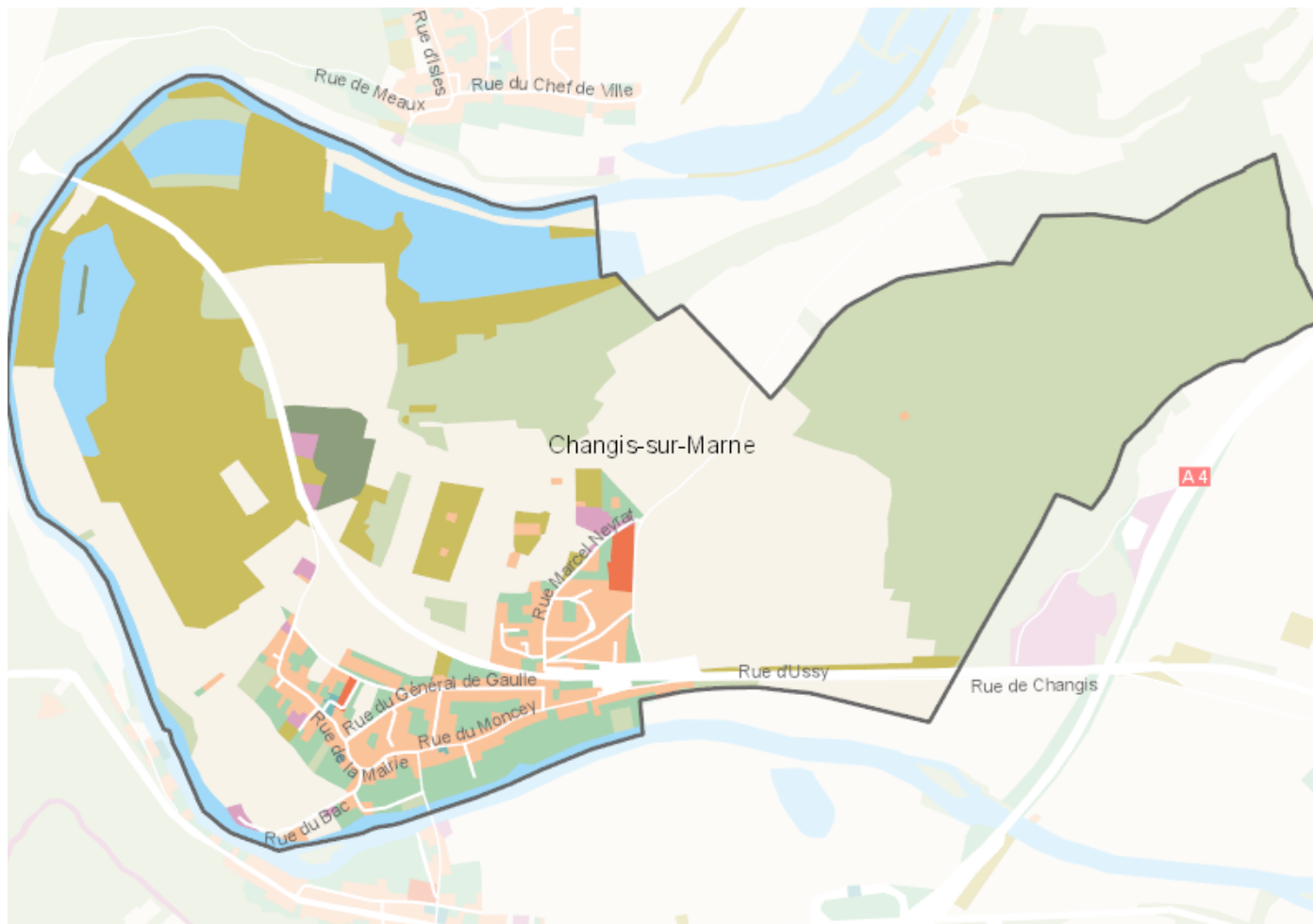


OCCUPATION DU SOL SIMPLIFIÉE 2017

Changis-sur-Marne

CARTOGRAPHIE



BILAN 2012 - 2017 (en ha)

| Type d'occupation du sol | Surface 2012 | Disparition | Apparition | Surface 2017 | Bilan |
|---|---------------|---------------|--------------|---------------|--------------|
| 1 Bois ou forêt | 192.59 | 0 | 0 | 192.59 | 0 |
| 2 Milieux semi-naturels | 101.95 | 0 | 20.83 | 122.79 | 20.83 |
| 3 Espaces agricoles | 243.86 | -11.97 | 0 | 231.9 | -11.97 |
| 4 Eau | 61.9 | -0.43 | 0 | 61.48 | -0.43 |
| Espace agricoles, forestiers et naturels | 600.32 | -11.14 | 19.57 | 608.75 | 8.43 |
| 5 Espaces ouverts artificialisés | 25.39 | -0.53 | 1.62 | 26.47 | 1.08 |
| Espaces ouverts artificialisés | 25.39 | -0.53 | 1.62 | 26.47 | 1.08 |
| 6 Habitat individuel | 34.43 | 0 | 3.28 | 37.71 | 3.28 |
| 7 Habitat collectif | 2.28 | 0 | 0 | 2.28 | 0 |
| 8 Activités | 2.84 | 0 | 1.07 | 3.91 | 1.07 |
| 9 Equipements | 0.4 | 0 | 0 | 0.4 | 0 |
| 10 Transports | 14.18 | 0 | 0 | 14.18 | 0 |
| 11 Carrières, décharges, chantiers | 20.85 | -20.55 | 6.68 | 6.98 | -13.87 |
| Espaces construits artificialisés | 74.98 | -19.57 | 10.05 | 65.47 | -9.52 |
| Total | 700.69 | -31.24 | 31.24 | 700.69 | 0 |

CHIFFRES CLÉS

