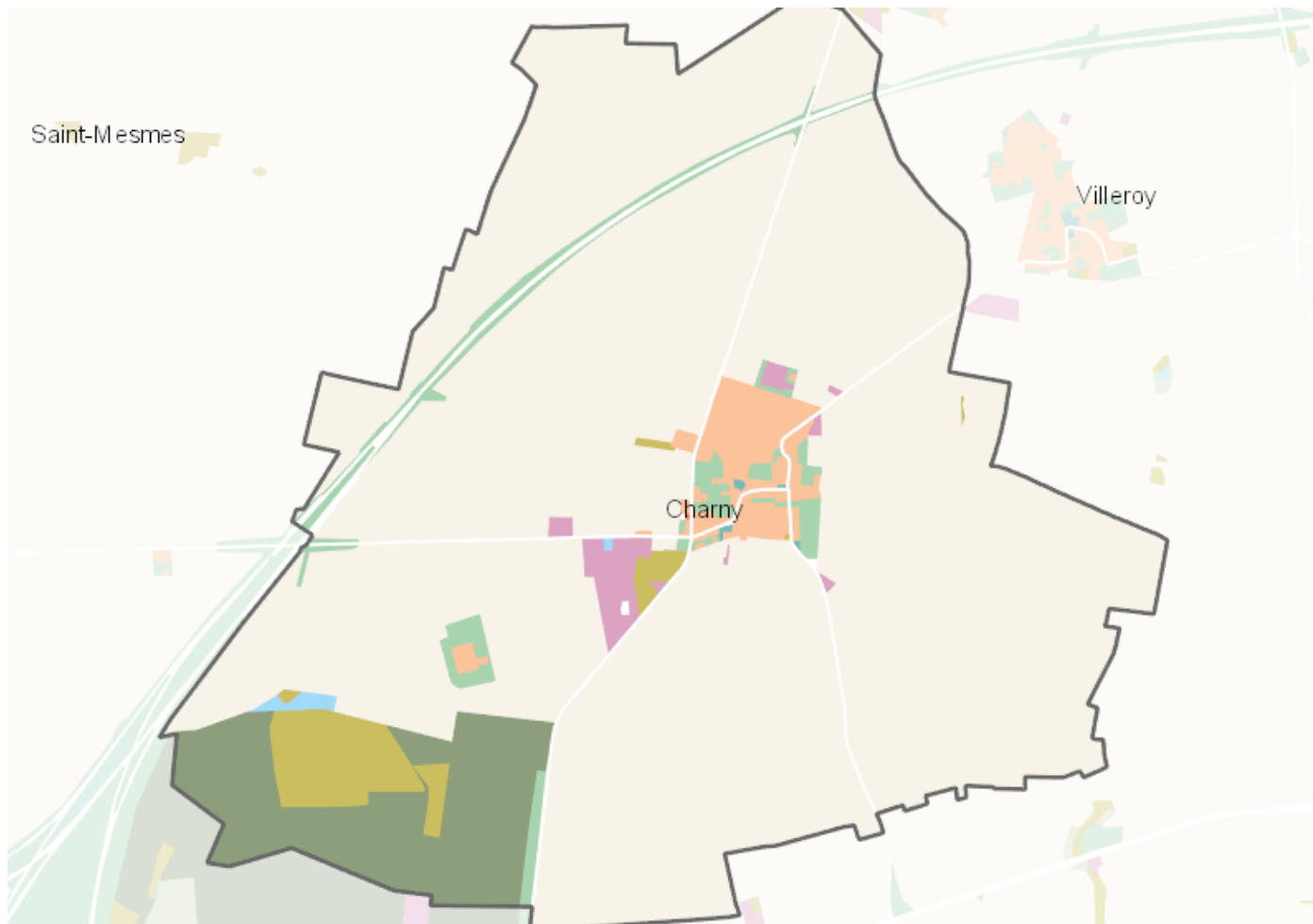


# OCCUPATION DU SOL SIMPLIFIÉE 2017

Charny

CARTOGRAPHIE



## BILAN 2012 - 2017 (en ha)

| Type d'occupation du sol                        | Surface 2012   | Disparition   | Apparition   | Surface 2017   | Bilan         |
|---|----------------|---------------|--------------|----------------|---------------|
| 1 Bois ou forêt                                 | 0              | 0             | 0            | 0              | 0             |
| 2 Milieux semi-naturels                         | 5.9            | -0.3          | 29.03        | 34.64          | 28.74         |
| 3 Espaces agricoles                             | 1047.98        | -17.3         | 0            | 1030.67        | -17.3         |
| 4 Eau   | 2.33           | 0             | 0.26         | 2.59           | 0.26          |
| <b>Espace agricoles, forestiers et naturels</b> | <b>1056.21</b> | <b>-17.6</b>  | <b>29.3</b>  | <b>1067.91</b> | <b>11.7</b>   |
| 5 Espaces ouverts artificialisés                | 31.77          | -0.3          | 3.33         | 34.8           | 3.03          |
| <b>Espaces ouverts artificialisés</b>           | <b>31.77</b>   | <b>-0.3</b>   | <b>3.33</b>  | <b>34.8</b>    | <b>3.03</b>   |
| 6 Habitat individuel                            | 32.49          | 0             | 1.69         | 34.18          | 1.69          |
| 7 Habitat collectif                             | 0.05           | 0             | 0            | 0.05           | 0             |
| 8 Activités                                     | 11.26          | 0             | 2.79         | 14.05          | 2.79          |
| 9 Equipements                                   | 0.73           | 0             | 0            | 0.73           | 0             |
| 10 Transports                                   | 9.53           | 0             | 0            | 9.53           | 0             |
| 11 Carrières, décharges, chantiers              | 112.71         | -34.82        | 15.62        | 93.51          | -19.2         |
| <b>Espaces construits artificialisés</b>        | <b>166.78</b>  | <b>-32.62</b> | <b>17.9</b>  | <b>152.06</b>  | <b>-14.72</b> |
| <b>Total</b>                                    | <b>1254.76</b> | <b>-50.53</b> | <b>50.53</b> | <b>1254.77</b> | <b>0</b>      |

## CHIFFRES CLÉS

