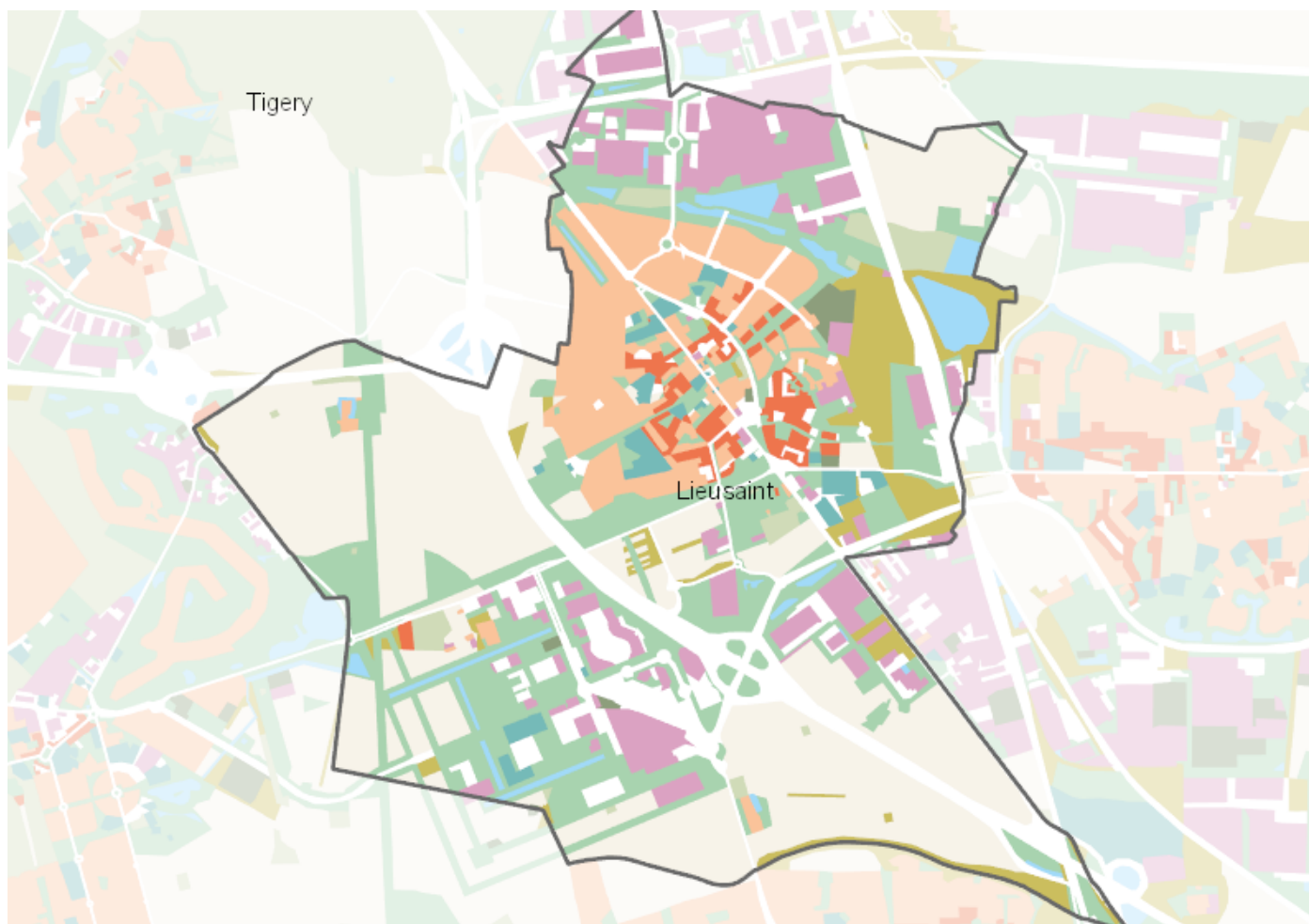


# OCCUPATION DU SOL SIMPLIFIÉE 2017

Lieusaint

CARTOGRAPHIE



## BILAN 2012 - 2017 (en ha)

| Type d'occupation du sol                        | Surface 2012   | Disparition   | Apparition   | Surface 2017   | Bilan         |
|---|----------------|---------------|--------------|----------------|---------------|
| 1 Bois ou forêt                                 | 21.58          | -0.47         | 0            | 21.11          | -0.47         |
| 2 Milieux semi-naturels                         | 85.82          | -19.81        | 0            | 66             | -19.81        |
| 3 Espaces agricoles                             | 396.36         | -35.92        | 0            | 360.43         | -35.92        |
| 4 Eau   | 19.2           | 0             | 11.68        | 30.88          | 11.68         |
| <b>Espace agricoles, forestiers et naturels</b> | <b>522.95</b>  | <b>-44.53</b> | <b>0</b>     | <b>478.42</b>  | <b>-44.53</b> |
| 5 Espaces ouverts artificialisés                | 251.57         | -8.84         | 33.23        | 275.96         | 24.39         |
| <b>Espaces ouverts artificialisés</b>           | <b>251.57</b>  | <b>-8.84</b>  | <b>33.23</b> | <b>275.96</b>  | <b>24.39</b>  |
| 6 Habitat individuel                            | 105.19         | -0.42         | 0.97         | 105.74         | 0.55          |
| 7 Habitat collectif                             | 17.67          | 0             | 8.77         | 26.44          | 8.77          |
| 8 Activités                                     | 93.37          | -0.34         | 13.8         | 106.83         | 13.46         |
| 9 Equipements                                   | 15.89          | -0.12         | 4.65         | 20.42          | 4.53          |
| 10 Transports                                   | 166.7          | -2.63         | 10.67        | 174.74         | 8.04          |
| 11 Carrières, décharges, chantiers              | 21.99          | -21.9         | 6.69         | 6.78           | -15.21        |
| <b>Espaces construits artificialisés</b>        | <b>420.81</b>  | <b>-11.35</b> | <b>31.49</b> | <b>440.95</b>  | <b>20.14</b>  |
| <b>Total</b>                                    | <b>1195.33</b> | <b>-64.72</b> | <b>64.72</b> | <b>1195.33</b> | <b>0</b>      |

## CHIFFRES CLÉS

