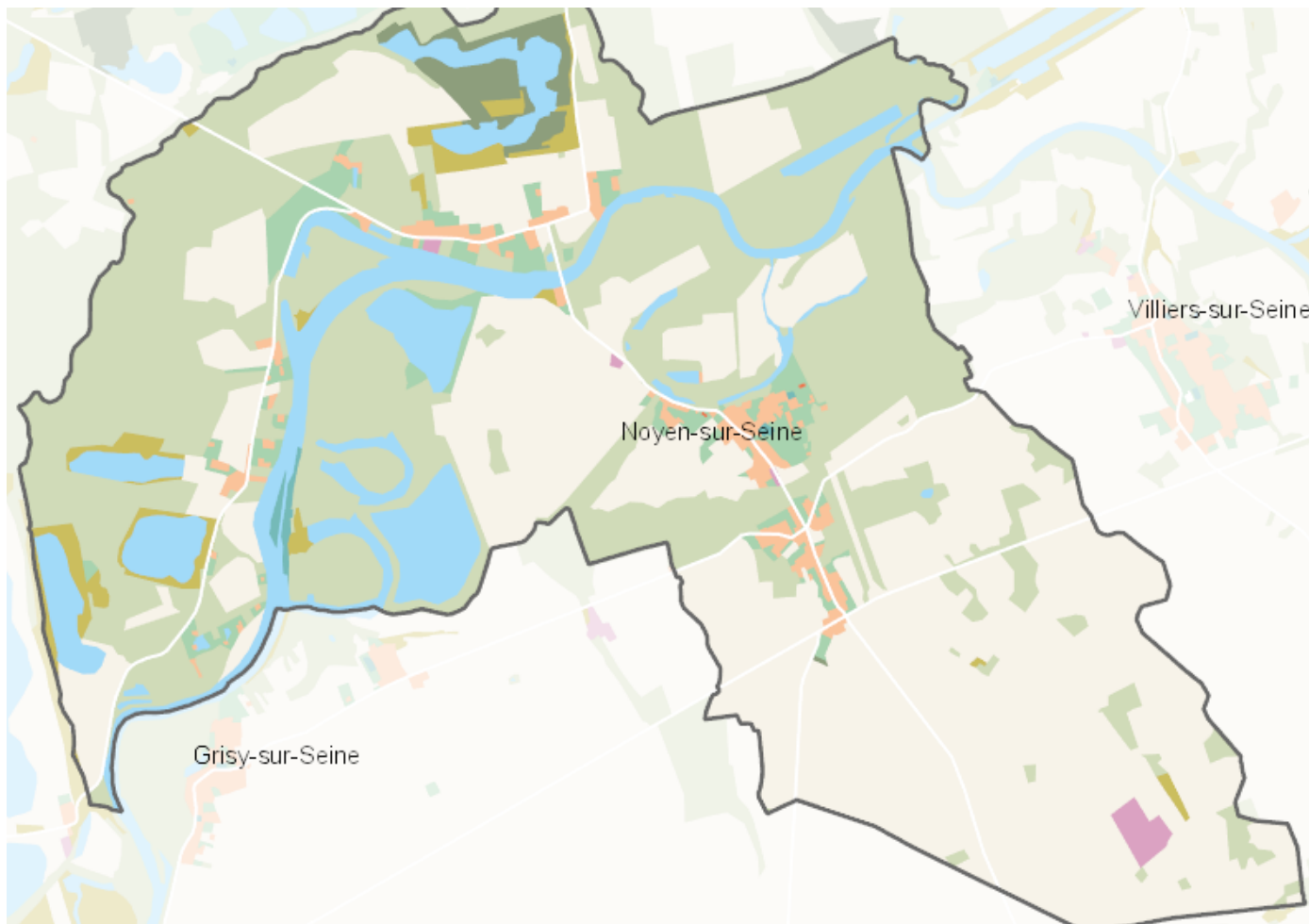


# OCCUPATION DU SOL SIMPLIFIÉE 2017

Noyen-sur-Seine

CARTOGRAPHIE



## BILAN 2012 - 2017 (en ha)

| Type d'occupation du sol                        | Surface 2012   | Disparition   | Apparition   | Surface 2017   | Bilan         |
|---|----------------|---------------|--------------|----------------|---------------|
| 1 Bois ou forêt                                 | 449.75         | 0             | 0            | 449.75         | 0             |
| 2 Milieux semi-naturels                         | 27.1           | -2.46         | 0            | 24.64          | -2.46         |
| 3 Espaces agricoles                             | 557.43         | -23.02        | 0            | 534.41         | -23.02        |
| 4 Eau   | 119.25         | -1.59         | 7.94         | 125.59         | 6.35          |
| <b>Espace agricoles, forestiers et naturels</b> | <b>1153.53</b> | <b>-21.1</b>  | <b>1.96</b>  | <b>1134.39</b> | <b>-19.14</b> |
| 5 Espaces ouverts artificialisés                | 32.99          | 0             | 5.53         | 38.52          | 5.53          |
| <b>Espaces ouverts artificialisés</b>           | <b>32.99</b>   | <b>0</b>      | <b>5.53</b>  | <b>38.52</b>   | <b>5.53</b>   |
| 6 Habitat individuel                            | 25.12          | 0             | 0            | 25.12          | 0             |
| 7 Habitat collectif                             | 0.08           | 0             | 0            | 0.08           | 0             |
| 8 Activités                                     | 0.99           | 0             | 4.13         | 5.12           | 4.13          |
| 9 Equipements                                   | 2.74           | 0             | 0            | 2.74           | 0             |
| 10 Transports                                   | 0              | 0             | 0            | 0              | 0             |
| 11 Carrières, décharges, chantiers              | 7.08           | -1.96         | 11.44        | 16.55          | 9.48          |
| <b>Espaces construits artificialisés</b>        | <b>36.01</b>   | <b>-1.96</b>  | <b>15.57</b> | <b>49.61</b>   | <b>13.6</b>   |
| <b>Total</b>                                    | <b>1222.53</b> | <b>-23.06</b> | <b>23.06</b> | <b>1222.52</b> | <b>0</b>      |

## CHIFFRES CLÉS

