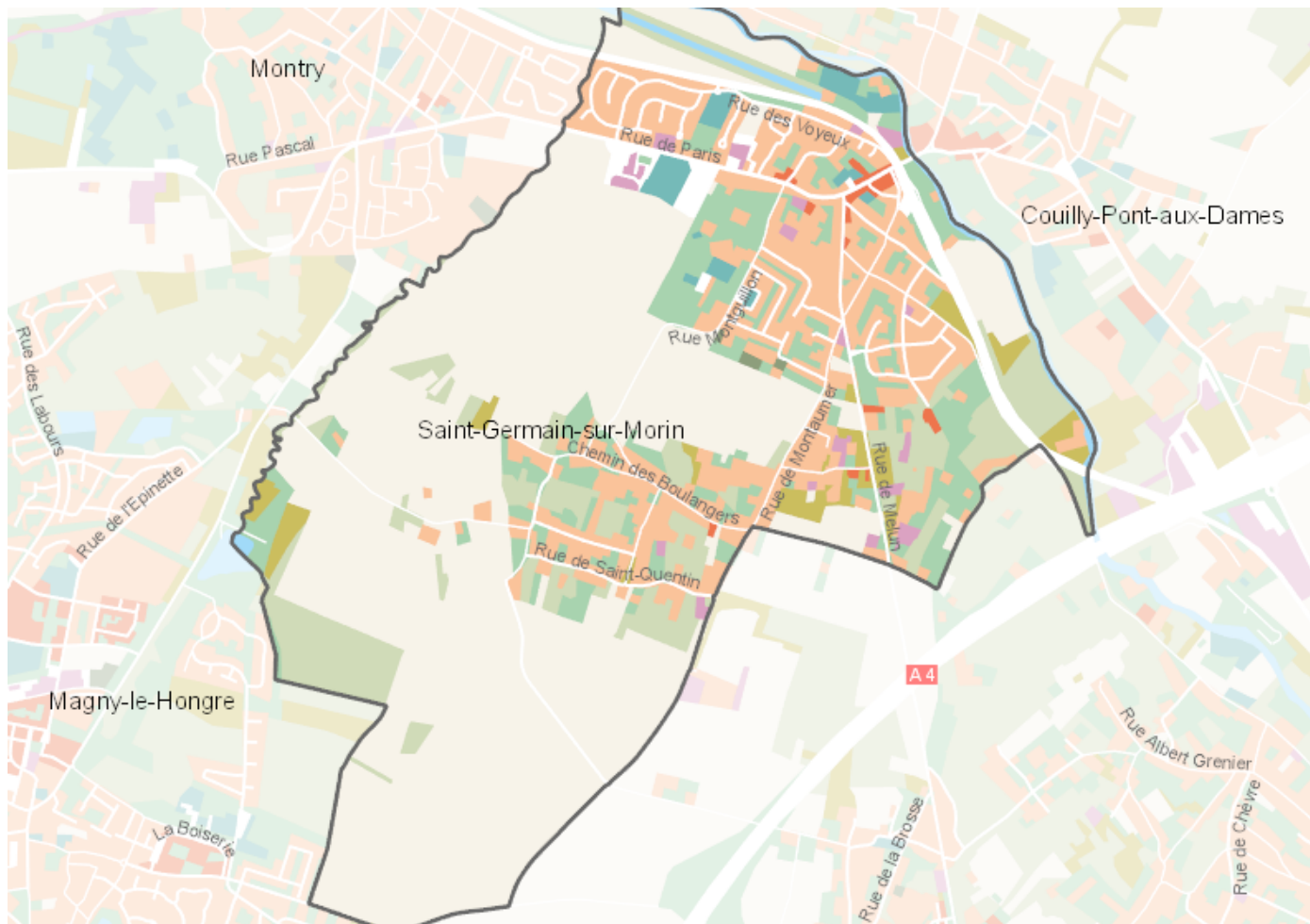


# OCCUPATION DU SOL SIMPLIFIÉE 2017

Saint-Germain-sur-Morin

CARTOGRAPHIE



## BILAN 2012 - 2017 (en ha)

| Type d'occupation du sol                        | Surface 2012  | Disparition  | Apparition  | Surface 2017  | Bilan        |
|---|---------------|--------------|-------------|---------------|--------------|
| 1 Bois ou forêt                                 | 50.78         | -1.34        | 0           | 49.45         | -1.34        |
| 2 Milieux semi-naturels                         | 12.12         | -0.23        | 0           | 11.89         | -0.23        |
| 3 Espaces agricoles                             | 251.28        | -4.6         | 0           | 246.68        | -4.6         |
| 4 Eau   | 5.8           | 0            | 0           | 5.8           | 0            |
| <b>Espace agricoles, forestiers et naturels</b> | <b>319.98</b> | <b>-6.16</b> | <b>0</b>    | <b>313.82</b> | <b>-6.16</b> |
| 5 Espaces ouverts artificialisés                | 49.57         | -2.07        | 1.45        | 48.95         | -0.62        |
| <b>Espaces ouverts artificialisés</b>           | <b>49.57</b>  | <b>-2.07</b> | <b>1.45</b> | <b>48.95</b>  | <b>-0.62</b> |
| 6 Habitat individuel                            | 85.72         | -0.19        | 3.5         | 89.03         | 3.31         |
| 7 Habitat collectif                             | 1.96          | 0            | 0.77        | 2.73          | 0.77         |
| 8 Activités                                     | 4.97          | 0            | 0           | 4.97          | 0            |
| 9 Equipements                                   | 4.18          | 0            | 2.05        | 6.23          | 2.05         |
| 10 Transports                                   | 10.09         | 0            | 2.04        | 12.13         | 2.04         |
| 11 Carrières, décharges, chantiers              | 1.93          | -1.93        | 0.55        | 0.55          | -1.38        |
| <b>Espaces construits artificialisés</b>        | <b>108.85</b> | <b>0</b>     | <b>6.78</b> | <b>115.64</b> | <b>6.78</b>  |
| <b>Total</b>                                    | <b>478.4</b>  | <b>-8.23</b> | <b>8.23</b> | <b>478.41</b> | <b>0</b>     |

## CHIFFRES CLÉS

