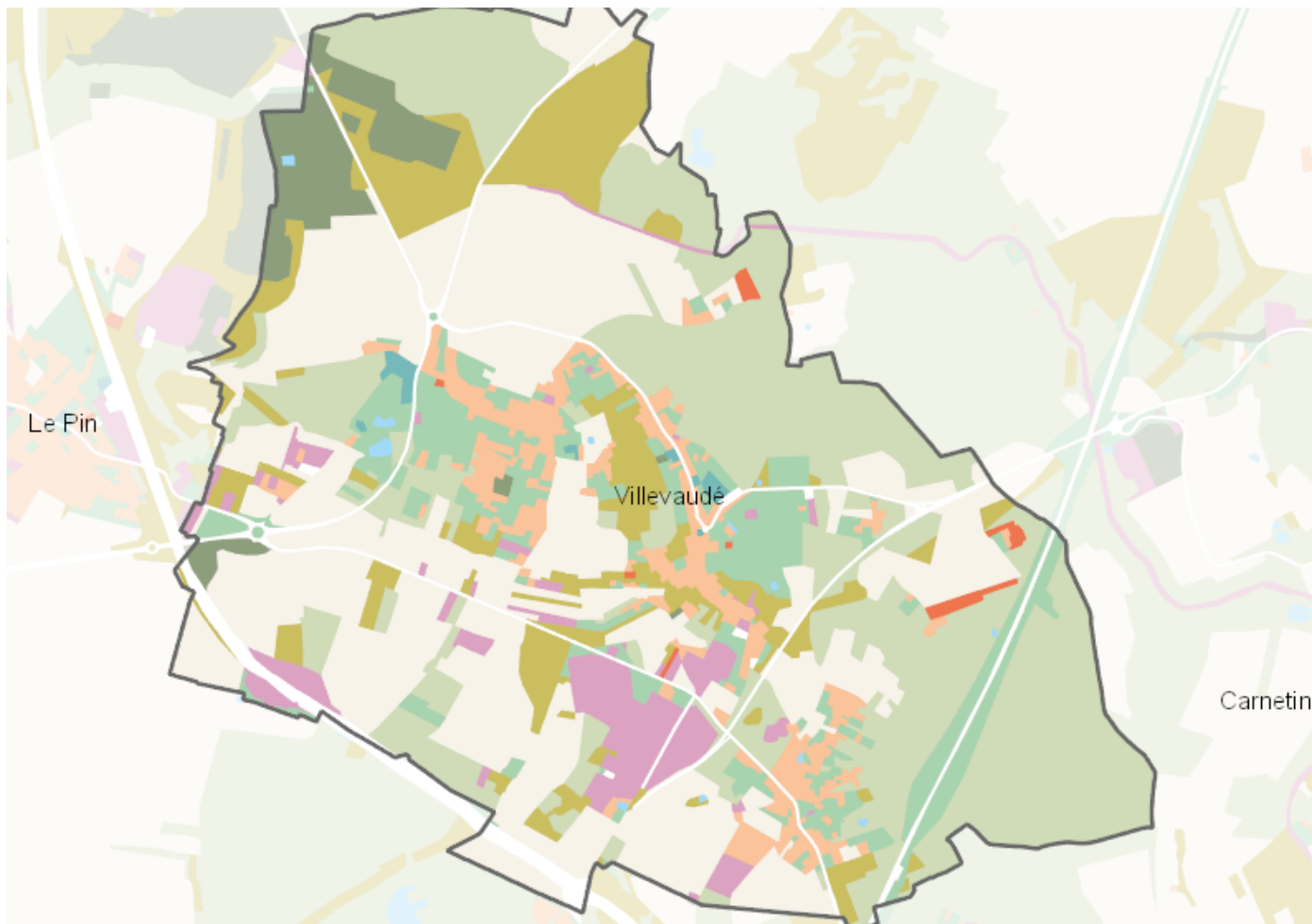


# OCCUPATION DU SOL SIMPLIFIÉE 2017

Villevaudé

CARTOGRAPHIE



## BILAN 2012 - 2017 (en ha)

| Type d'occupation du sol                        | Surface 2012  | Disparition   | Apparition   | Surface 2017  | Bilan         |
|---|---------------|---------------|--------------|---------------|---------------|
| 1 Bois ou forêt                                 | 307.42        | -2.98         | 3.79         | 308.23        | 0.81          |
| 2 Milieux semi-naturels                         | 90.06         | -6.17         | 20.82        | 104.72        | 14.65         |
| 3 Espaces agricoles                             | 359.7         | -34.06        | 1.41         | 327.05        | -32.66        |
| 4 Eau   | 1.79          | 0             | 0.22         | 2.01          | 0.22          |
| <b>Espace agricoles, forestiers et naturels</b> | <b>758.98</b> | <b>-21.51</b> | <b>4.54</b>  | <b>742</b>    | <b>-16.98</b> |
| 5 Espaces ouverts artificialisés                | 95.17         | -2.25         | 1.74         | 94.65         | -0.51         |
| <b>Espaces ouverts artificialisés</b>           | <b>95.17</b>  | <b>-2.25</b>  | <b>1.74</b>  | <b>94.65</b>  | <b>-0.51</b>  |
| 6 Habitat individuel                            | 59.01         | 0             | 0.47         | 59.48         | 0.47          |
| 7 Habitat collectif                             | 5.43          | -2.76         | 1.46         | 4.13          | -1.3          |
| 8 Activités                                     | 42.58         | -1            | 2.39         | 43.98         | 1.4           |
| 9 Equipements                                   | 3.6           | 0             | 0            | 3.6           | 0             |
| 10 Transports                                   | 15.94         | -0.58         | 0            | 15.36         | -0.58         |
| 11 Carrières, décharges, chantiers              | 19.05         | -2.42         | 19.92        | 36.55         | 17.5          |
| <b>Espaces construits artificialisés</b>        | <b>145.61</b> | <b>-5.83</b>  | <b>23.32</b> | <b>163.1</b>  | <b>17.49</b>  |
| <b>Total</b>                                    | <b>999.76</b> | <b>-29.6</b>  | <b>29.6</b>  | <b>999.75</b> | <b>0</b>      |

## CHIFFRES CLÉS

