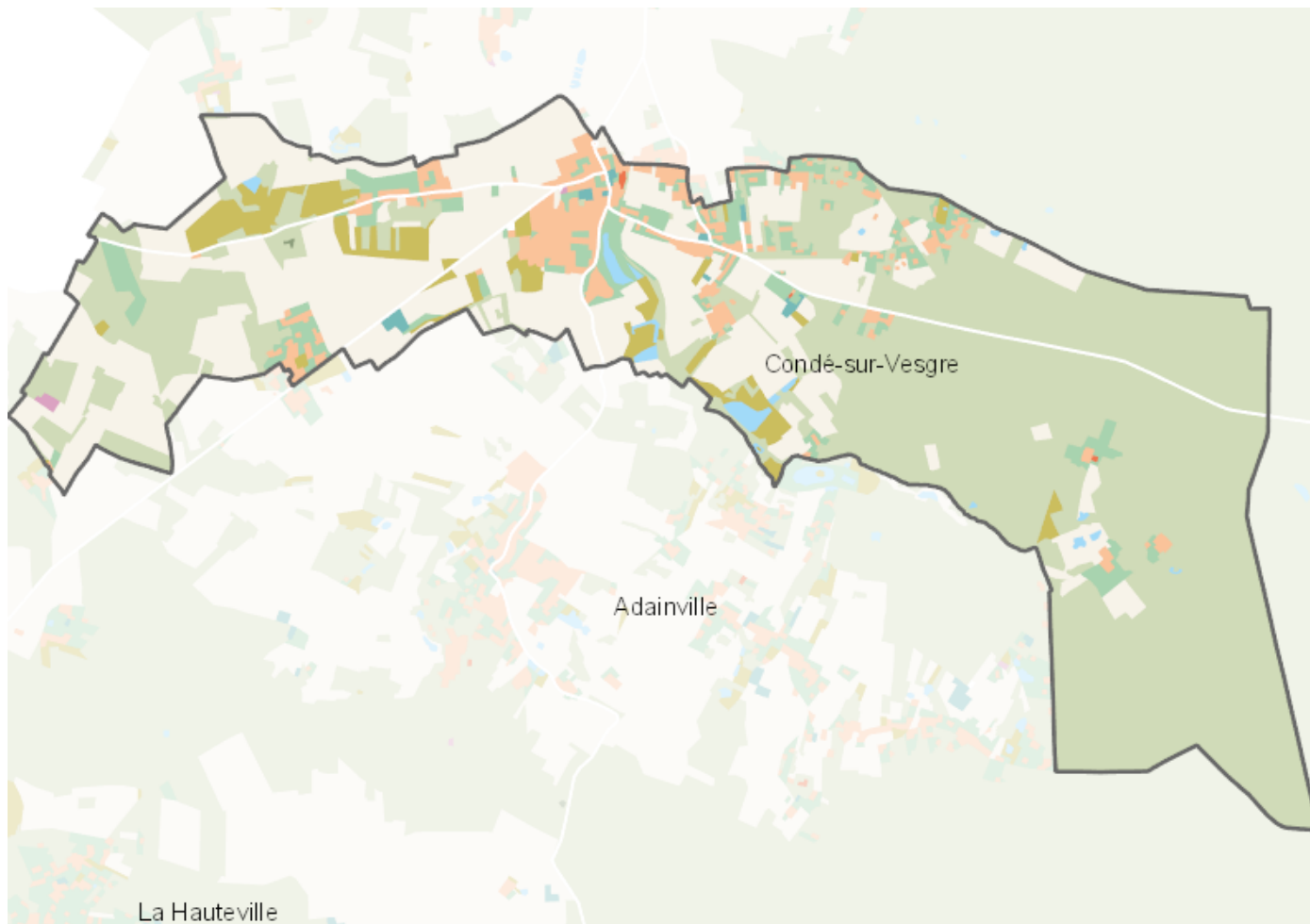


# OCCUPATION DU SOL SIMPLIFIÉE 2017

Condé-sur-Vesgre

CARTOGRAPHIE



## BILAN 2012 - 2017 (en ha)

| Type d'occupation du sol                        | Surface 2012  | Disparition  | Apparition  | Surface 2017   | Bilan        |
|---|---------------|--------------|-------------|----------------|--------------|
| 1 Bois ou forêt                                 | 585.36        | 0            | 0           | 585.36         | 0            |
| 2 Milieux semi-naturels                         | 45.69         | -0.07        | 0           | 45.61          | -0.07        |
| 3 Espaces agricoles                             | 317.99        | -2.08        | 0           | 315.91         | -2.08        |
| 4 Eau   | 8.2           | 0            | 0           | 8.2            | 0            |
| <b>Espace agricoles, forestiers et naturels</b> | <b>957.24</b> | <b>-2.15</b> | <b>0</b>    | <b>955.09</b>  | <b>-2.15</b> |
| 5 Espaces ouverts artificialisés                | 60.27         | -0.53        | 0.13        | 59.87          | -0.39        |
| <b>Espaces ouverts artificialisés</b>           | <b>60.27</b>  | <b>-0.53</b> | <b>0.13</b> | <b>59.87</b>   | <b>-0.39</b> |
| 6 Habitat individuel                            | 54.84         | -0.07        | 2.54        | 57.31          | 2.47         |
| 7 Habitat collectif                             | 0.45          | 0            | 0           | 0.45           | 0            |
| 8 Activités                                     | 0.77          | 0            | 0.11        | 0.89           | 0.11         |
| 9 Equipements                                   | 3.55          | 0            | 0.12        | 3.67           | 0.12         |
| 10 Transports                                   | 0.67          | 0            | 0.09        | 0.77           | 0.09         |
| 11 Carrières, décharges, chantiers              | 0.41          | -0.25        | 0           | 0.16           | -0.25        |
| <b>Espaces construits artificialisés</b>        | <b>60.69</b>  | <b>-0.13</b> | <b>2.68</b> | <b>63.23</b>   | <b>2.55</b>  |
| <b>Total</b>                                    | <b>1078.2</b> | <b>-2.81</b> | <b>2.81</b> | <b>1078.19</b> | <b>0</b>     |

## CHIFFRES CLÉS

