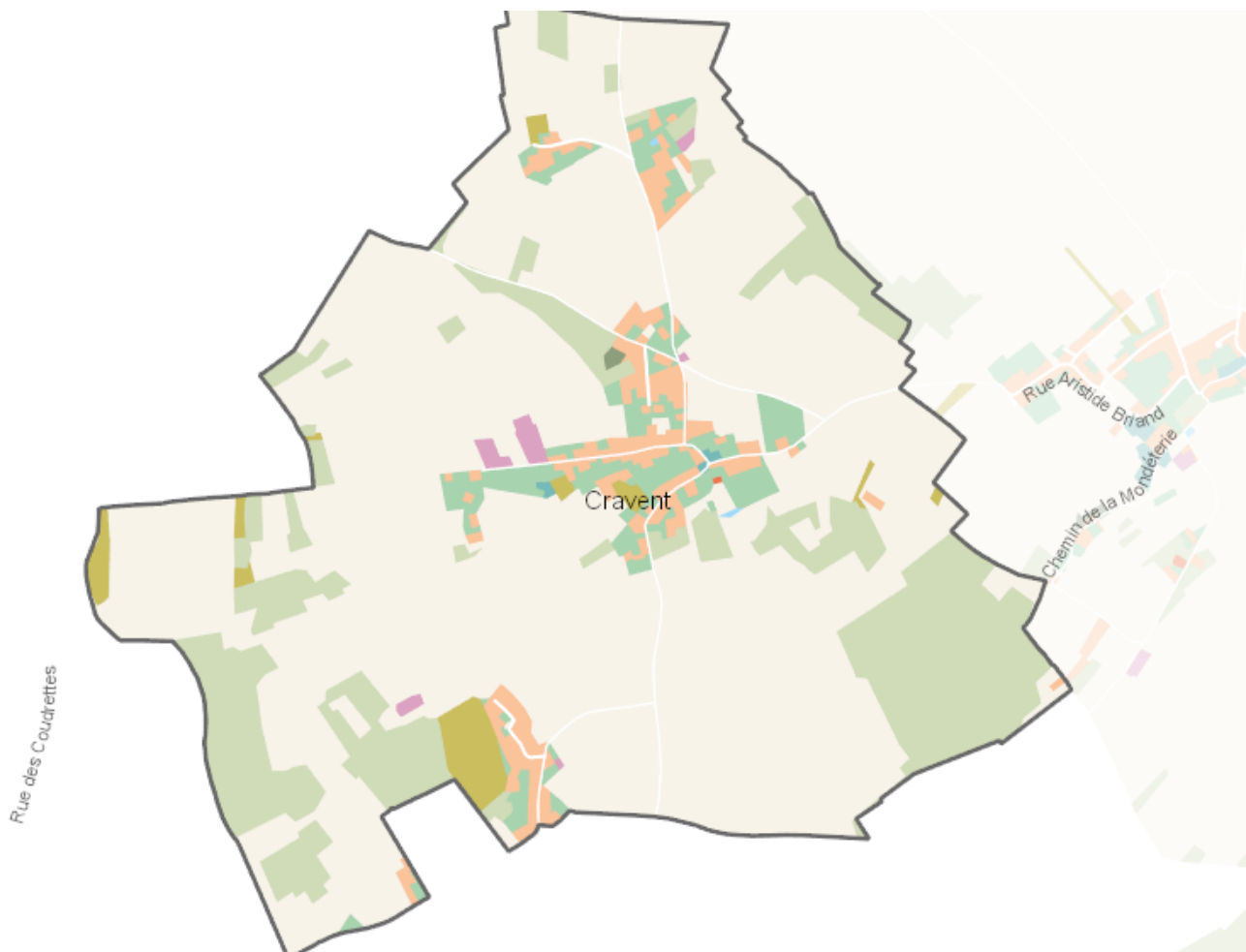


OCCUPATION DU SOL SIMPLIFIÉE 2017

Cravent

CARTOGRAPHIE



BILAN 2012 - 2017 (en ha)

| Type d'occupation du sol | Surface 2012 | Disparition | Apparition | Surface 2017 | Bilan |
|---|---------------|--------------|-------------|---------------|--------------|
| 1 Bois ou forêt | 109.68 | 0 | 0 | 109.68 | 0 |
| 2 Milieux semi-naturels | 11.51 | -0.3 | 0 | 11.22 | -0.3 |
| 3 Espaces agricoles | 433.5 | -0.68 | 0 | 432.82 | -0.68 |
| 4 Eau | 0.17 | 0 | 0 | 0.17 | 0 |
| Espace agricoles, forestiers et naturels | 554.87 | -0.98 | 0 | 553.89 | -0.98 |
| 5 Espaces ouverts artificialisés | 27.89 | -0.64 | 0.17 | 27.42 | -0.47 |
| Espaces ouverts artificialisés | 27.89 | -0.64 | 0.17 | 27.42 | -0.47 |
| 6 Habitat individuel | 25.09 | 0 | 0.43 | 25.52 | 0.43 |
| 7 Habitat collectif | 0.07 | 0 | 0 | 0.07 | 0 |
| 8 Activités | 2.14 | 0 | 0.81 | 2.95 | 0.81 |
| 9 Equipements | 0.6 | 0 | 0 | 0.6 | 0 |
| 10 Transports | 0 | 0 | 0 | 0 | 0 |
| 11 Carrières, décharges, chantiers | 0.17 | -0.17 | 0.38 | 0.38 | 0.21 |
| Espaces construits artificialisés | 28.07 | -0.17 | 1.62 | 29.52 | 1.45 |
| Total | 610.83 | -1.79 | 1.79 | 610.83 | 0 |

CHIFFRES CLÉS

