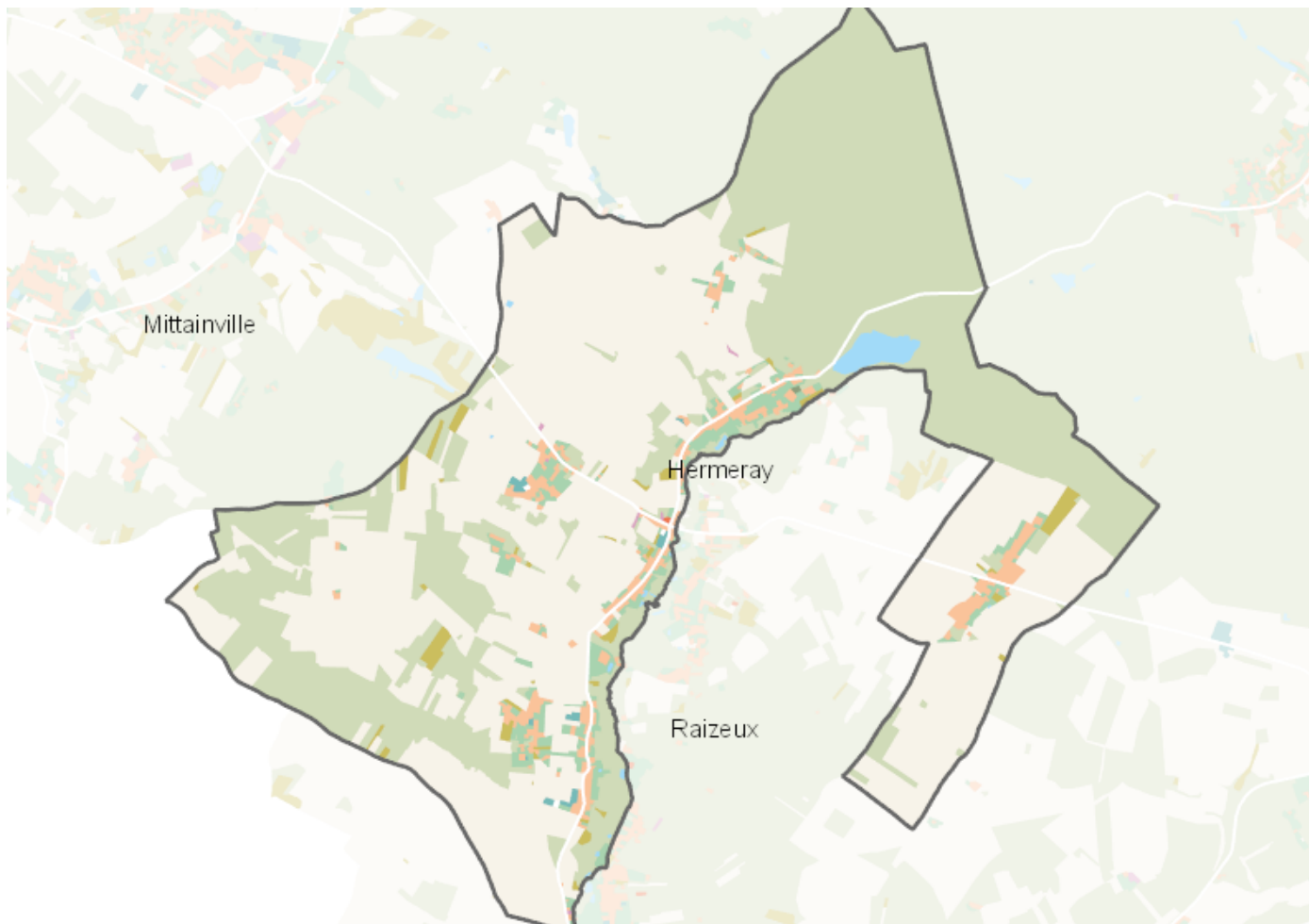


OCCUPATION DU SOL SIMPLIFIÉE 2017

Hermeray

CARTOGRAPHIE



BILAN 2012 - 2017 (en ha)

| Type d'occupation du sol | Surface 2012 | Disparition | Apparition | Surface 2017 | Bilan |
|---|----------------|--------------|-------------|----------------|--------------|
| 1 Bois ou forêt | 749.66 | 0 | 0 | 749.66 | 0 |
| 2 Milieux semi-naturels | 22.56 | -0.5 | 0.31 | 22.38 | -0.19 |
| 3 Espaces agricoles | 934.23 | -0.66 | 0 | 933.57 | -0.66 |
| 4 Eau | 13.43 | 0 | 0 | 13.43 | 0 |
| Espace agricoles, forestiers et naturels | 1719.88 | -0.85 | 0 | 1719.03 | -0.85 |
| 5 Espaces ouverts artificialisés | 57.18 | -0.31 | 0.24 | 57.1 | -0.07 |
| Espaces ouverts artificialisés | 57.18 | -0.31 | 0.24 | 57.1 | -0.07 |
| 6 Habitat individuel | 56.39 | 0 | 0.68 | 57.07 | 0.68 |
| 7 Habitat collectif | 0.31 | 0 | 0 | 0.31 | 0 |
| 8 Activités | 1.08 | 0 | 0 | 1.08 | 0 |
| 9 Equipements | 3.83 | 0 | 0.13 | 3.95 | 0.13 |
| 10 Transports | 0.51 | 0 | 0 | 0.51 | 0 |
| 11 Carrières, décharges, chantiers | 0.15 | -0.15 | 0.26 | 0.26 | 0.12 |
| Espaces construits artificialisés | 62.27 | 0 | 0.92 | 63.19 | 0.92 |
| Total | 1839.33 | -1.16 | 1.16 | 1839.32 | 0 |

CHIFFRES CLÉS

