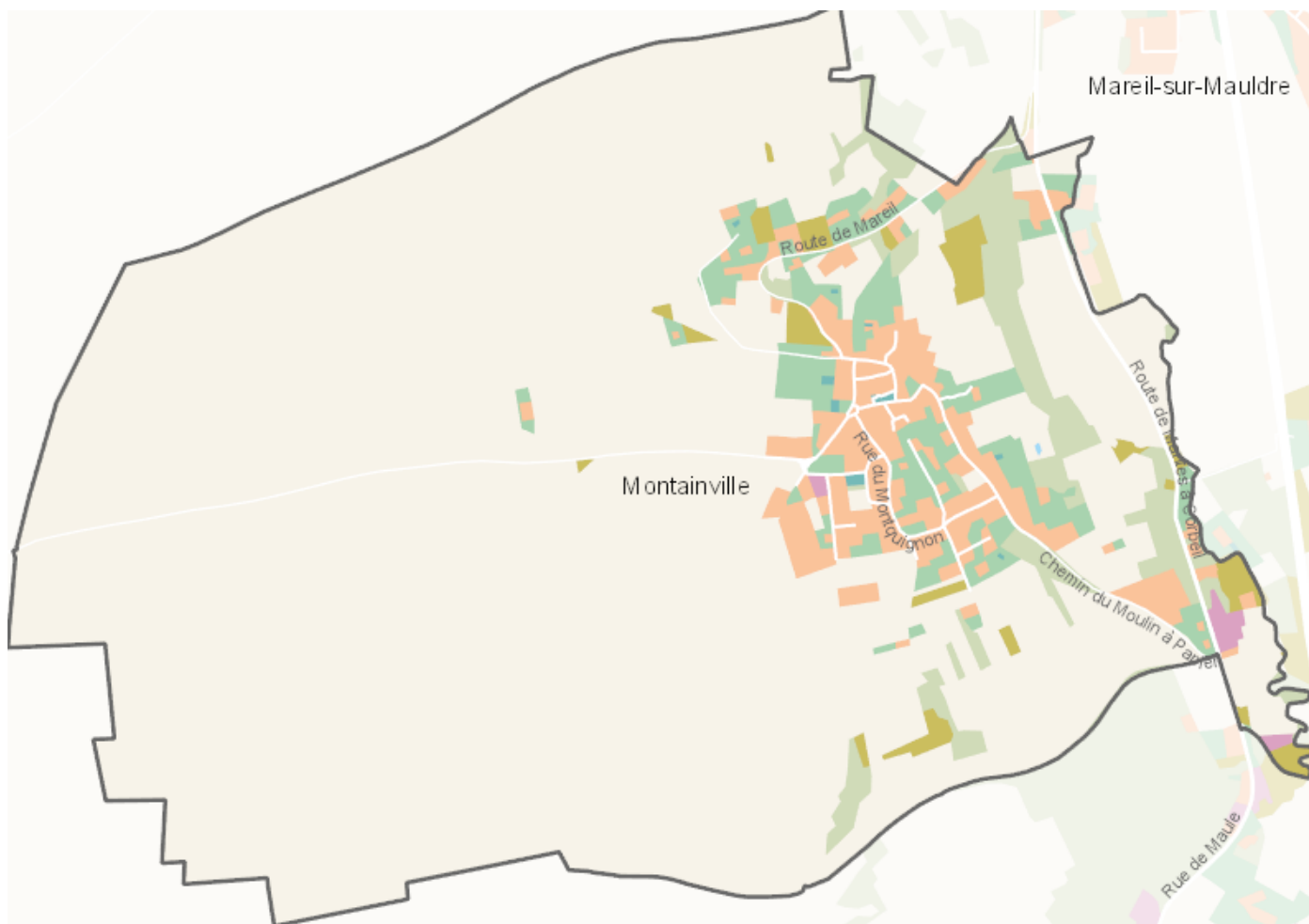


# OCCUPATION DU SOL SIMPLIFIÉE 2017

Montainville

CARTOGRAPHIE



## BILAN 2012 - 2017 (en ha)

| Type d'occupation du sol                        | Surface 2012  | Disparition  | Apparition  | Surface 2017  | Bilan        |
|---|---------------|--------------|-------------|---------------|--------------|
| 1 Bois ou forêt                                 | 20.04         | 0            | 0           | 20.04         | 0            |
| 2 Milieux semi-naturels                         | 12.98         | -5.23        | 0           | 7.75          | -5.23        |
| 3 Espaces agricoles                             | 394.13        | -0.46        | 5.02        | 398.69        | 4.56         |
| 4 Eau   | 0.03          | 0            | 0           | 0.03          | 0            |
| <b>Espace agricoles, forestiers et naturels</b> | <b>427.18</b> | <b>-0.67</b> | <b>0</b>    | <b>426.51</b> | <b>-0.67</b> |
| 5 Espaces ouverts artificialisés                | 21.26         | -0.31        | 0           | 20.96         | -0.31        |
| <b>Espaces ouverts artificialisés</b>           | <b>21.26</b>  | <b>-0.31</b> | <b>0</b>    | <b>20.96</b>  | <b>-0.31</b> |
| 6 Habitat individuel                            | 25.31         | 0            | 0.98        | 26.29         | 0.98         |
| 7 Habitat collectif                             | 0             | 0            | 0           | 0             | 0            |
| 8 Activités                                     | 1.32          | 0            | 0           | 1.32          | 0            |
| 9 Equipements                                   | 0.49          | 0            | 0           | 0.49          | 0            |
| 10 Transports                                   | 0.09          | 0            | 0           | 0.09          | 0            |
| 11 Carrières, décharges, chantiers              | 0             | 0            | 0           | 0             | 0            |
| <b>Espaces construits artificialisés</b>        | <b>27.21</b>  | <b>0</b>     | <b>0.98</b> | <b>28.19</b>  | <b>0.98</b>  |
| <b>Total</b>                                    | <b>475.65</b> | <b>-0.98</b> | <b>0.98</b> | <b>475.66</b> | <b>0</b>     |

## CHIFFRES CLÉS

