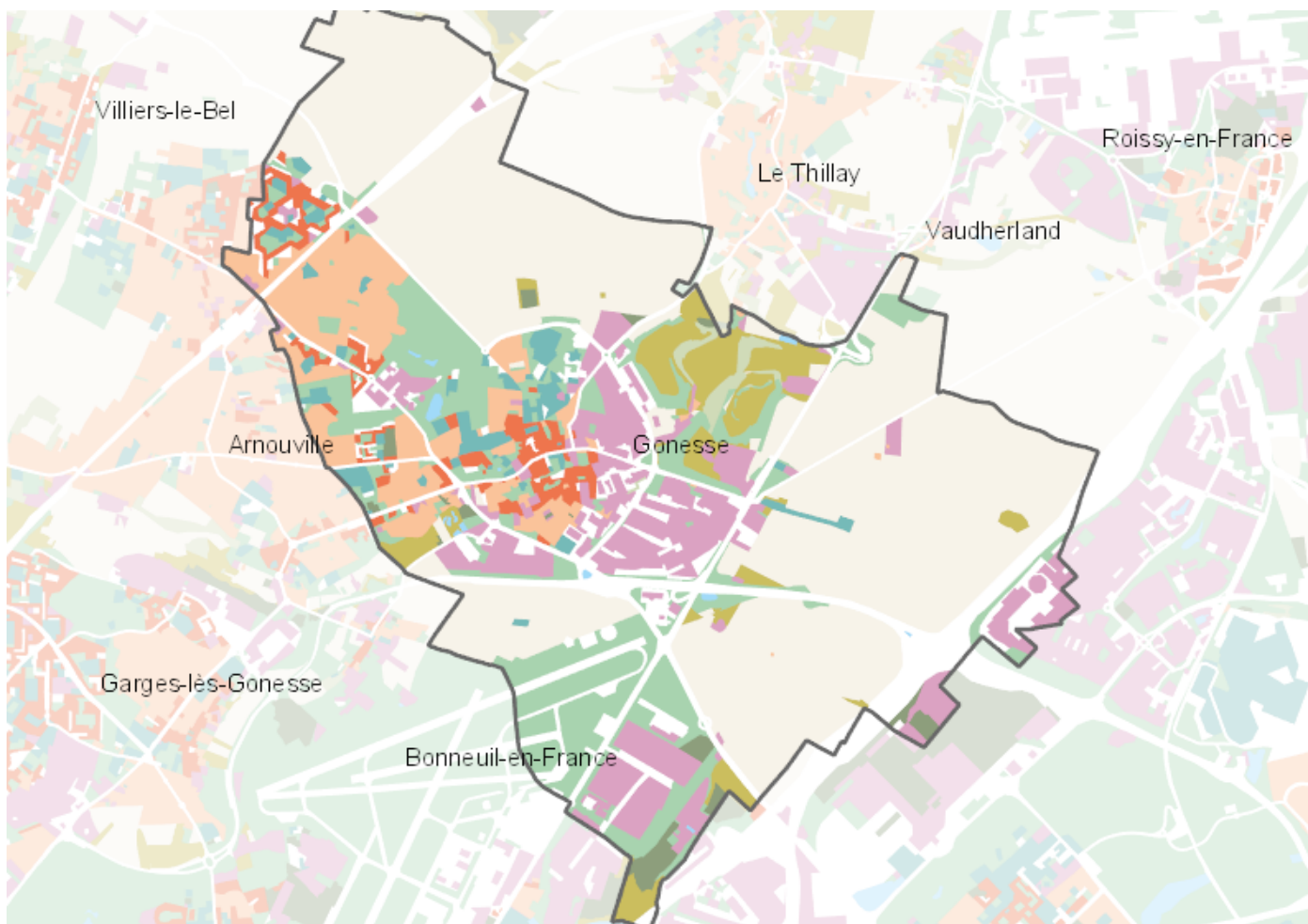


# OCCUPATION DU SOL SIMPLIFIÉE 2017

Gonesse

CARTOGRAPHIE



## BILAN 2012 - 2017 (en ha)

| Type d'occupation du sol                        | Surface 2012   | Disparition   | Apparition   | Surface 2017   | Bilan        |
|---|----------------|---------------|--------------|----------------|--------------|
| 1 Bois ou forêt                                 | 12.78          | 0             | 0            | 12.78          | 0            |
| 2 Milieux semi-naturels                         | 91.5           | -11.23        | 12.93        | 93.2           | 1.7          |
| 3 Espaces agricoles                             | 916.4          | -8.77         | 10.22        | 917.85         | 1.45         |
| 4 Eau   | 5.12           | 0             | 0            | 5.12           | 0            |
| <b>Espace agricoles, forestiers et naturels</b> | <b>1025.8</b>  | <b>-8.71</b>  | <b>11.87</b> | <b>1028.96</b> | <b>3.15</b>  |
| 5 Espaces ouverts artificialisés                | 294.19         | -16.68        | 11.87        | 289.38         | -4.81        |
| <b>Espaces ouverts artificialisés</b>           | <b>294.19</b>  | <b>-16.68</b> | <b>11.87</b> | <b>289.38</b>  | <b>-4.81</b> |
| 6 Habitat individuel                            | 143.05         | 0             | 0.32         | 143.37         | 0.32         |
| 7 Habitat collectif                             | 51.93          | -0.64         | 3.42         | 54.71          | 2.78         |
| 8 Activités                                     | 216.31         | -9.02         | 9.96         | 217.25         | 0.94         |
| 9 Equipements                                   | 42.93          | -0.82         | 4.96         | 47.08          | 4.15         |
| 10 Transports                                   | 214.03         | -0.68         | 12.38        | 225.73         | 11.7         |
| 11 Carrières, décharges, chantiers              | 42.68          | -30.89        | 12.67        | 24.46          | -18.23       |
| <b>Espaces construits artificialisés</b>        | <b>710.92</b>  | <b>-19.44</b> | <b>21.1</b>  | <b>712.58</b>  | <b>1.66</b>  |
| <b>Total</b>                                    | <b>2030.91</b> | <b>-44.84</b> | <b>44.84</b> | <b>2030.92</b> | <b>0</b>     |

## CHIFFRES CLÉS

